



Test Report

No.: SZTY1109049795LP

Date: SEP 26, 2011

Page 1 of 6

YINFENG ELECTRONICS, FACTORY
3F, NO.7 SHA WAN STREET, BUJI TOWN,
LONGGANG DISTRICT SHENZHEN CHINA

The following samples were submitted and identified by/on behalf of the client as:

Name of Product/Item : COLOR RING INDUCTANCE 色环电感
Sample Receiving Date : SEP 21, 2011
Testing Period : SEP 21, 2011 TO SEP 26, 2011

| Test Requested | | Result |
|----------------|--|--------|
| 1. | As specified by the client, to determine Lead, Cadmium, Mercury and Hexavalent Chromium content in the selected materials (see remark) of submitted sample with reference to Directive 2011/65/EU of the European Parliament and of The Council of 8 June 2011 (RoHS, Previously 2002/95/EC) | PASS |
| 2. | Determination of PBBs & PBDEs content in submitted sample with reference to Directive 2011/65/EU of the European Parliament and of The Council of 8 June 2011 (RoHS, Previously 2002/95/EC) | PASS |

Remark : It is requested by applicant, only the selected material(s) in the submitted sample was (were) tested, the detail of tested material(s) is (are) listed in specimen description in the result page(s)

***** For Further Details, Please Refer to the Following Page(s) *****

Signed for and on behalf of
SGS-CSTC Ltd.

Feng Shaohong, Jessica
Senior Technical Manager

This document is issued by the Company subject to its General Conditions of Service printed overleaf, available on request or accessible at http://www.sgs.com/terms_and_conditions.htm and, for electronic format documents, subject to Terms and Conditions for Electronic Documents at www.sgs.com/terms_e-document.htm. Attention is drawn to the limitation of liability, indemnification and jurisdiction issues defined therein. Any holder of this document is advised that information contained hereon reflects the Company's findings at the time of its intervention only and within the limits of Client's instructions, if any. The Company's sole responsibility is to its Client and this document does not exonerate parties to a transaction from exercising all their rights and obligations under the transaction documents. This document cannot be reproduced except in full, without prior written approval of the Company. Any unauthorized alteration, forgery or falsification of the content or appearance of this document is unlawful and offenders may be prosecuted to the fullest extent of the law. Unless otherwise stated the results shown in this test report refer only to the sample(s) tested and such sample(s) are retained for 30 days only.

Attention: To ensure the authenticity of testing /inspection report & certificate, please contact us at telephone: (86-755)83071443, or email: CN.Doccheck@sgs.com

SGS-CSTC Standards Technical Services Co., Ltd.
Shenzhen Bureau Toys Laboratory

2,4,5/F, Oastar Building, Zhongkang Road, Shangmeilin, Shenzhen, China 518049 t (86-755) 83114358 f (86-755) 83106190 www.cn.sgs.com
中国·深圳·上梅林中康路奥士达大厦2,4,5层 邮编: 518049 t (86-755) 83114358 f (86-755) 83106190 e sgs.china@sgs.com

Results:

1. EU Directive 2011/65/EU (RoHS, Previously 2002/95/EC) - Wet Chemical Pb, Cd, Hg & Cr (VI) Content

Method: With reference to IEC 62321: 2008

For Lead, Cadmium and Mercury, analysis was performed by Inductively Coupled Plasma Optical Emission Spectrometer (ICP-OES)

For Hexavalent Chromium, analysis was performed by Ultraviolet Visible Spectrophotometer (UV-Vis)

| Test Item(s) | 1 | MDL | Permissible Limit |
|---|----|---------|-------------------|
| Alias No. | 1 | -- | -- |
| Tracing No. | 1 | -- | -- |
| Lead (Pb) | ND | 0.0002% | 0.1% |
| Cadmium(Cd) | ND | 0.0002% | 0.01% |
| Mercury (Hg) | ND | 0.0002% | 0.1% |
| Hexavalent Chromium (CrVI) by alkaline extraction | ND | 0.0002% | 0.1% |

Specimen Description:

1. Inductance body

- Note:
- % = percentage by weight
 - MDL = Method Detection Limit
 - ND = Not Detected (lower than MDL)
 - 1% = 10000 mg/kg = 10000 ppm
 - The maximum permissible limit is quoted from the EU Directive 2011/65/EU Annex II

This document is issued by the Company subject to its General Conditions of Service printed overleaf, available on request or accessible at http://www.sgs.com/terms_and_conditions.htm and, for electronic format documents, subject to Terms and Conditions for Electronic Documents at www.sgs.com/terms_e-document.htm. Attention is drawn to the limitation of liability, indemnification and jurisdiction issues defined therein. Any holder of this document is advised that information contained hereon reflects the Company's findings at the time of its intervention only and within the limits of Client's instructions, if any. The Company's sole responsibility is to its Client and this document does not exonerate parties to a transaction from exercising all their rights and obligations under the transaction documents. This document cannot be reproduced except in full, without prior written approval of the Company. Any unauthorized alteration, forgery or falsification of the content or appearance of this document is unlawful and offenders may be prosecuted to the fullest extent of the law. Unless otherwise stated the results shown in this test report refer only to the sample(s) tested and such sample(s) are retained for 30 days only.

Attention: To ensure the authenticity of testing /inspection report & certificate, please contact us at telephone: (86-755)83071443, or email: CN.Doccheck@sgs.com

2. EU Directive 2011/65/EU (RoHS, Previously 2002/95/EC) - Wet Chemical PBBs & PBDEs Content

Method: With reference to IEC 62321 : 2008, Annex A

Analysis was performed by Gas Chromatography Mass Spectrometer (GC-MS)

| Test Item(s) | 1 | MDL | Permissible Limit |
|----------------------------|-----------|---------|-------------------|
| Alias No. | 2 | -- | -- |
| Tracing No. | 1 | -- | -- |
| Sum of PBBs | ND | -- | 0.1% |
| Monobromobiphenyl | ND | 0.0005% | |
| Dibromobiphenyl | ND | 0.0005% | |
| Tribromobiphenyl | ND | 0.0005% | |
| Tetrabromobiphenyl | ND | 0.0005% | |
| Pentabromobiphenyl | ND | 0.0005% | |
| Hexabromobiphenyl | ND | 0.0005% | |
| Heptabromobiphenyl | ND | 0.0005% | |
| Octabromobiphenyl | ND | 0.0005% | |
| Nonabromobiphenyl | ND | 0.0005% | |
| Decabromobiphenyl | ND | 0.0005% | |
| Sum of PBDEs | ND | -- | 0.1% |
| Monobromodiphenyl ether | ND | 0.0005% | |
| Dibromodiphenyl ether | ND | 0.0005% | |
| Tribromodiphenyl ether | ND | 0.0005% | |
| Tetrabromodiphenyl ether | ND | 0.0005% | |
| Pentabromodiphenyl ether | ND | 0.0005% | |
| Hexabromodiphenyl ether | ND | 0.0005% | |
| Heptabromodiphenyl ether | ND | 0.0005% | |
| Octabromodiphenyl ether | ND | 0.0005% | |
| Nonabromodiphenyl ether | ND | 0.0005% | |
| Decabromodiphenyl ether ## | ND | 0.0005% | |

Specimen Description:

1. Inductance body

This document is issued by the Company subject to its General Conditions of Service printed overleaf, available on request or accessible at http://www.sgs.com/terms_and_conditions.htm and, for electronic format documents, subject to Terms and Conditions for Electronic Documents at www.sgs.com/terms_e-document.htm. Attention is drawn to the limitation of liability, indemnification and jurisdiction issues defined therein. Any holder of this document is advised that information contained hereon reflects the Company's findings at the time of its intervention only and within the limits of Client's instructions, if any. The Company's sole responsibility is to its Client and this document does not exonerate parties to a transaction from exercising all their rights and obligations under the transaction documents. This document cannot be reproduced except in full, without prior written approval of the Company. Any unauthorized alteration, forgery or falsification of the content or appearance of this document is unlawful and offenders may be prosecuted to the fullest extent of the law. Unless otherwise stated the results shown in this test report refer only to the sample(s) tested and such sample(s) are retained for 30 days only.

Attention: To ensure the authenticity of testing /inspection report & certificate, please contact us at telephone: (86-755)83071443, or email: CN.Doccheck@sgs.com

Test Report

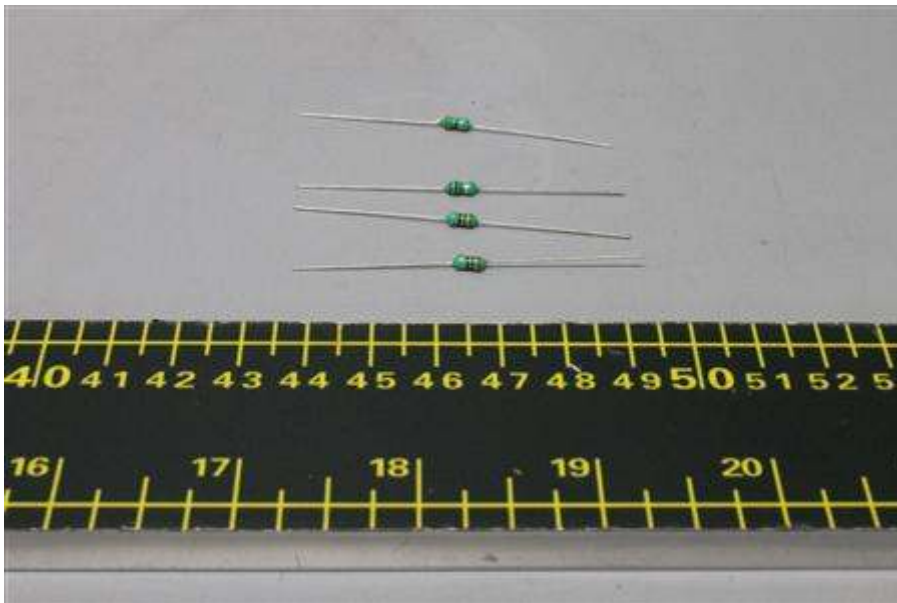
No.: SZTY1109049795LP

Date: SEP 26, 2011

Page 4 of 6

- Note:
- % = percentage by weight
 - MDL = Method Detection Limit
 - ND = Not Detected (lower than MDL)
 - 1% = 10000 mg/kg = 10000 ppm
 - ## The exemption of DecaBDE in polymeric application according 2005/717/EC was overruled by the European Court of Justice by its decision of 01.04.2008. Subsequently DecaBDE will be included in the sum of PBDE after 01.07.2008
 - The maximum permissible limit is quoted from the EU Directive 2011/65/EU Annex II

Sample Photo:



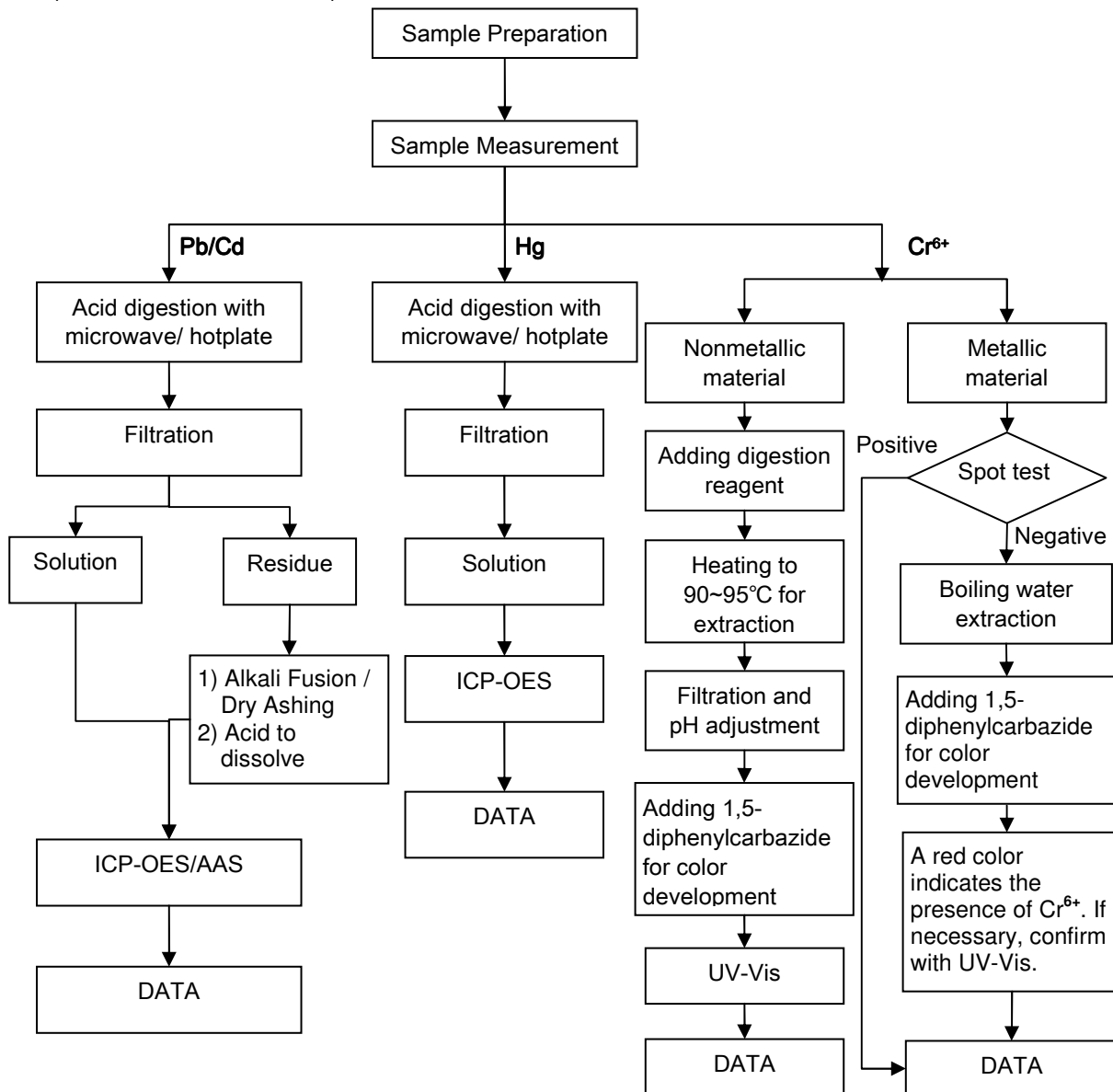
SGS authenticate the photo on original report only

This document is issued by the Company subject to its General Conditions of Service printed overleaf, available on request or accessible at http://www.sgs.com/terms_and_conditions.htm and, for electronic format documents, subject to Terms and Conditions for Electronic Documents at www.sgs.com/terms_e-document.htm. Attention is drawn to the limitation of liability, indemnification and jurisdiction issues defined therein. Any holder of this document is advised that information contained hereon reflects the Company's findings at the time of its intervention only and within the limits of Client's instructions, if any. The Company's sole responsibility is to its Client and this document does not exonerate parties to a transaction from exercising all their rights and obligations under the transaction documents. This document cannot be reproduced except in full, without prior written approval of the Company. Any unauthorized alteration, forgery or falsification of the content or appearance of this document is unlawful and offenders may be prosecuted to the fullest extent of the law. Unless otherwise stated the results shown in this test report refer only to the sample(s) tested and such sample(s) are retained for 30 days only.

Attention: To ensure the authenticity of testing /inspection report & certificate, please contact us at telephone: (86-755)83071443, or email: CN.Doccheck@sgs.com

RoHS Testing Flow Chart

- 1) Name of the person who made measurement: Iceman Cai
- 2) Name of the person in charge of measurement: Nina Ren
- 3) These samples were dissolved totally by pre-conditioning method according to below flow chart (Cr⁶⁺ test method excluded).

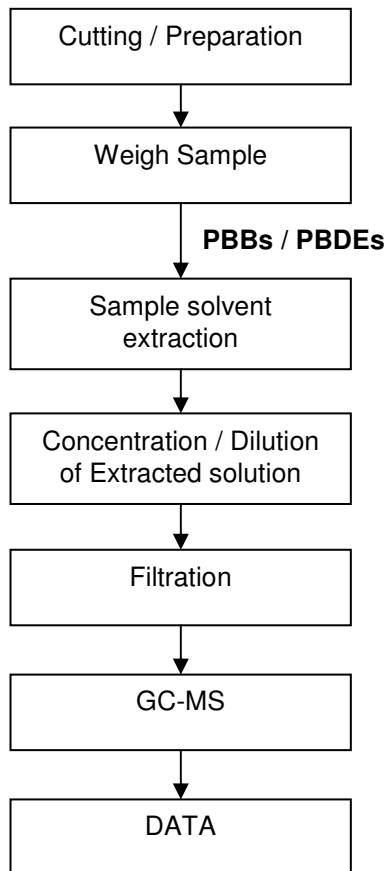


This document is issued by the Company subject to its General Conditions of Service printed overleaf, available on request or accessible at http://www.sgs.com/terms_and_conditions.htm and, for electronic format documents, subject to Terms and Conditions for Electronic Documents at www.sgs.com/terms_e-document.htm. Attention is drawn to the limitation of liability, indemnification and jurisdiction issues defined therein. Any holder of this document is advised that information contained hereon reflects the Company's findings at the time of its intervention only and within the limits of Client's instructions, if any. The Company's sole responsibility is to its Client and this document does not exonerate parties to a transaction from exercising all their rights and obligations under the transaction documents. This document cannot be reproduced except in full, without prior written approval of the Company. Any unauthorized alteration, forgery or falsification of the content or appearance of this document is unlawful and offenders may be prosecuted to the fullest extent of the law. Unless otherwise stated the results shown in this test report refer only to the sample(s) tested and such sample(s) are retained for 30 days only.

Attention: To ensure the authenticity of testing / inspection report & certificate, please contact us at telephone: (86-755)83071443, or email: CN.Doccheck@sgs.com

RoHS Testing Flow Chart

- 1) Name of the person who made measurement: Emmy Liu
- 2) Name of the person in charge of measurement: Tony Ji



*** End of Report ***

This document is issued by the Company subject to its General Conditions of Service printed overleaf, available on request or accessible at http://www.sgs.com/terms_and_conditions.htm and, for electronic format documents, subject to Terms and Conditions for Electronic Documents at www.sgs.com/terms_e-document.htm. Attention is drawn to the limitation of liability, indemnification and jurisdiction issues defined therein. Any holder of this document is advised that information contained hereon reflects the Company's findings at the time of its intervention only and within the limits of Client's instructions, if any. The Company's sole responsibility is to its Client and this document does not exonerate parties to a transaction from exercising all their rights and obligations under the transaction documents. This document cannot be reproduced except in full, without prior written approval of the Company. Any unauthorized alteration, forgery or falsification of the content or appearance of this document is unlawful and offenders may be prosecuted to the fullest extent of the law. Unless otherwise stated the results shown in this test report refer only to the sample(s) tested and such sample(s) are retained for 30 days only.

Attention: To ensure the authenticity of testing / inspection report & certificate, please contact us at telephone: (86-755)83071443, or email: CN.Doccheck@sgs.com